

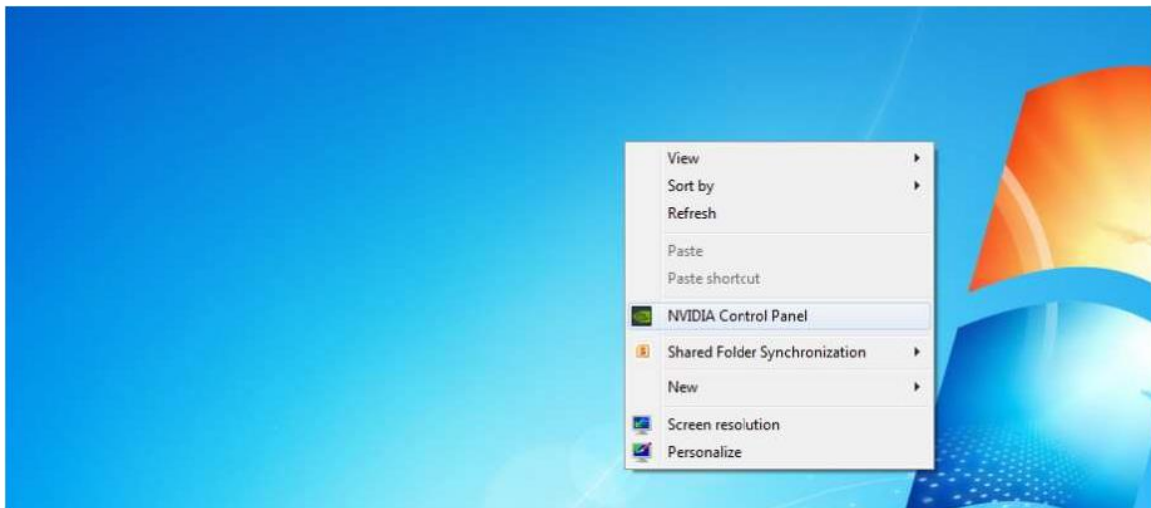
8K output resolution settings

Introduction

Following procedures show how to set up the PC output timing to 8K/1K. They are different according to different brand of graphic card. Nvidia display card can be configured with customized 8k/1k output resolution without disabling Digital Signature. Intel and some other brand display card may require disable Digital Signature and install INF driver to get 8k/1k output

For NVIDIA graphic card

Step 1: right click on the mouse to open up **NVIDIA Control Panel**.

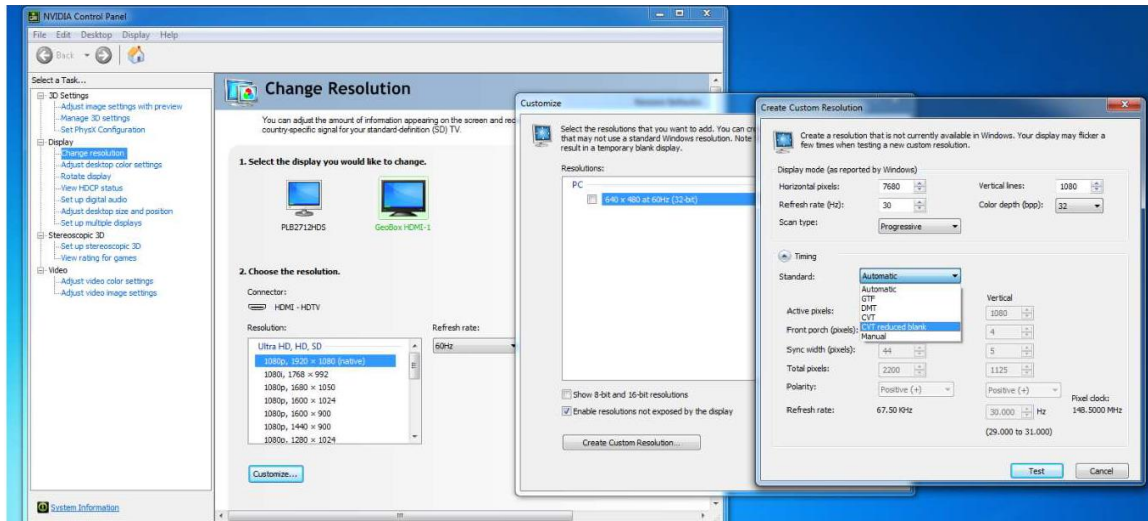


Step 2:

Go to **Display**→ select **GeoBox HDMI**→ **Change resolution**→ **Customize**→ **Create Custom Resolution**.

Step 3: In Create Custom Resolution window:

- **Horizontal pixels** choose 7680
- **Vertical lines** choose 1080 (or 1200)
- **Refresh rate (Hz)** choose 30
- Click **Timing** and choose in **Standard: CVT reduced blank**

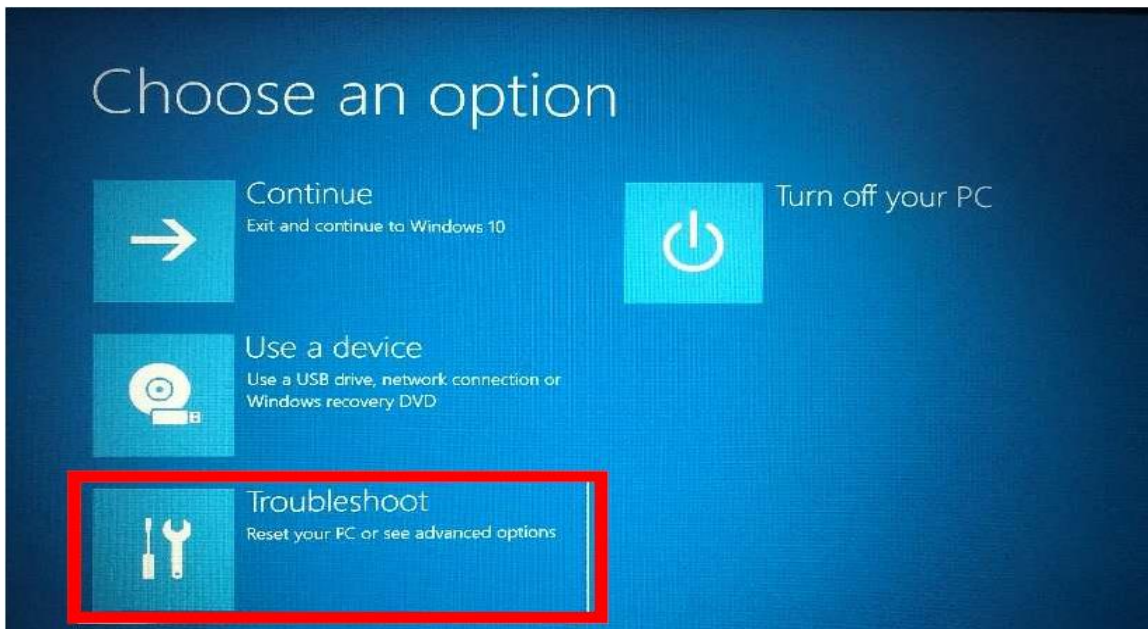


Step 3:

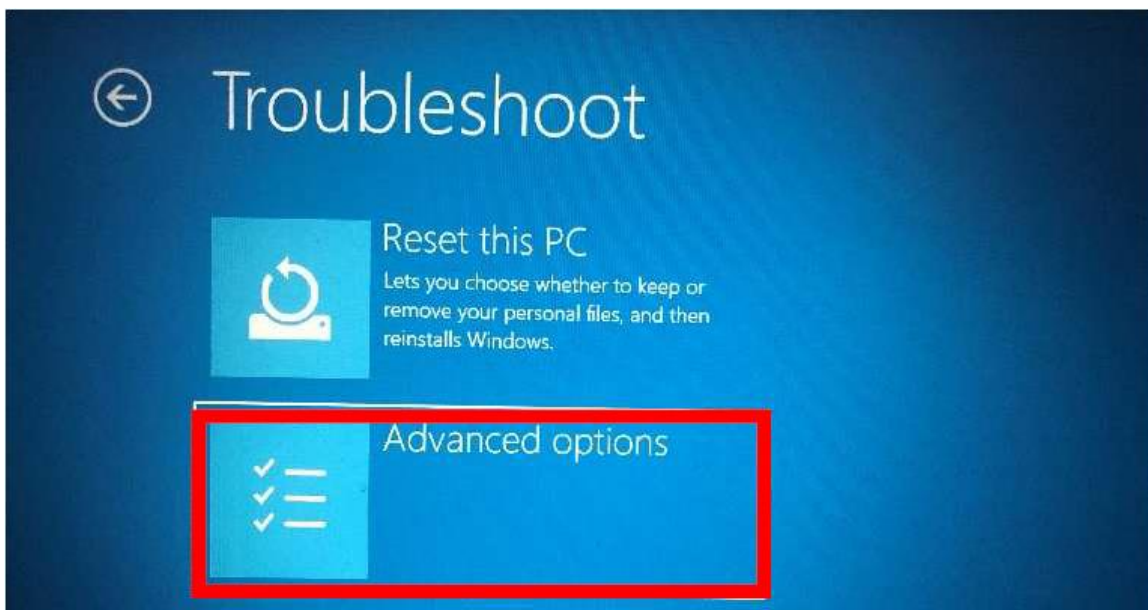
After finish **Nvidia Control Panel** output timing setting, user still needs to execute **Screen Resolution** setting to select 8k/1k output resolution for GeoBox. 8k/1k will be in the resolution list for GeoBox.

For Intel graphic card**Step 1. Disable Windows Digital Signature**

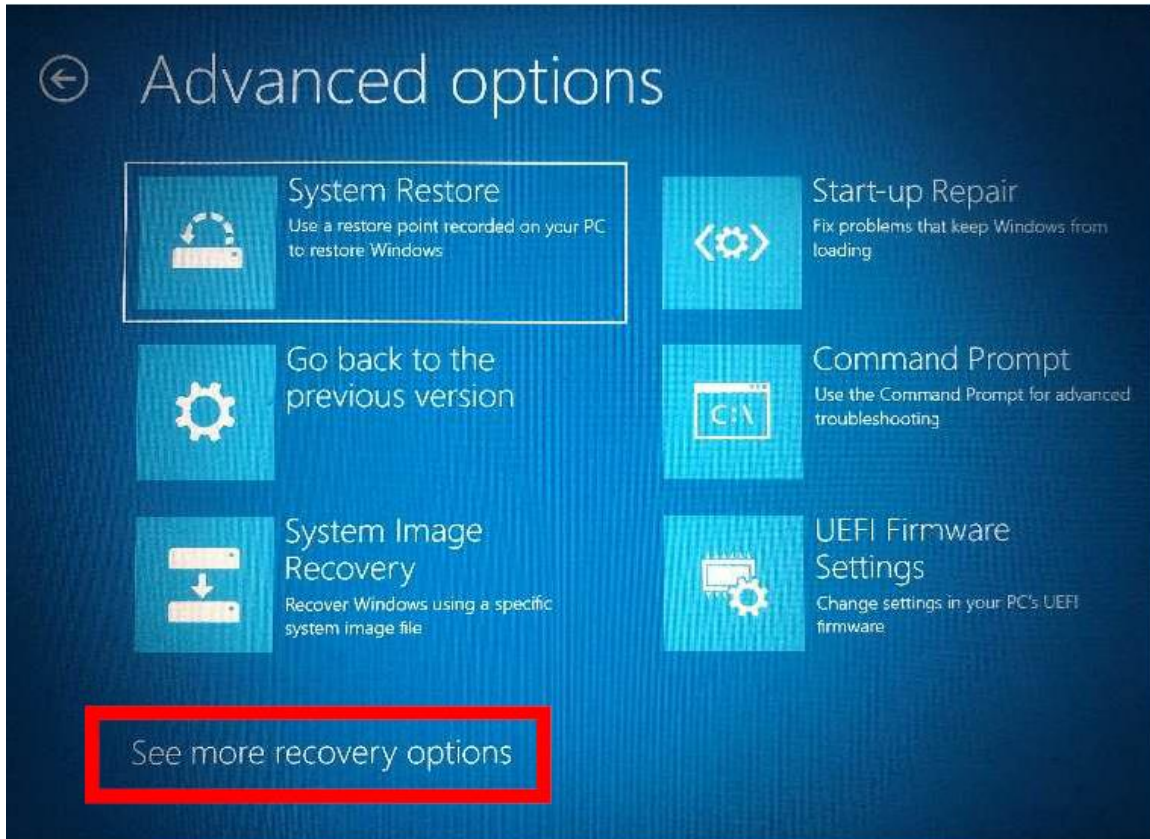
1. [Power off and Re-start] with [shift] key is pressed.
2. After Restart again, user will see below window. Please select [Troubleshoot]



3. Click [Advanced Settings]



4. Click [See more recovery Options]



5. Click [Startup Settings] and [Restart]
6. Wait for PC Restart, user will see below Start Up Settings screen. Please click [Disable driver signature enforcement].



7. Please install GeoBox.inf driver before re-start your PC. Otherwise, Digital Signature may be re-enabled after PC re-start.

Step 2: Install GeoBox INF file

Right Click on GeoBox.inf driver by mouse, then click [Install] to start installation.

After finish inf driver installation, user can start Intel display card settings

Step 3: Intel Display card 8k output setting procedures

1. Click [Intel Control Panel]
2. Select [Monitor]
3. Select [GeoBox HDMI]
4. Click [Customized resolution], then click [Yes]
5. Input required resolution and select [CVT-RB] (reduced blanking)
6. Click [Add] and confirm [Yes]
7. Right click Desktop and select [Resolution Settings]
8. Select GeoBox as Display 2 under extension mode
9. Select Display 2 and set Resolution at 7680x1080
10. Confirm to reserve the change

Important notice:

1. GeoBox can support horizontal resolution up to 3x1920=5760 or 4x 1920=7680 @30Hz refresh rate with vertical resolution up to 1200. If user wants to support 5760x1080 input timing, please add this timing into supporting list through the same procedures as 8k/1k.
2. The resolution installation is related to the input port EDID settings in GeoBox. If user set EDID at specific timing (such as 3840*2160 @60Hz) in specific input port (such as HDMI1), once user select other input port or different EDID resolution, the PC output resolution will be also changed to new resolution but not at 8k/1k. If user selects back to this input port and EDID, PC will automatically output 8k/1k timing.
3. The PC with 4k/2k @60hz output capability should be able to output 8k/1k timing.

4. User can re-start the PC and the 8k/1k output resolution will be kept at the same without change.
5. User can turn off/on GeoBox without affect 8k/1k settings unless user changing input port or set different EDID.
6. When 8k/1k signal is enabled, user needs to set Video Wall [Zoom] at H=4 to see clear full HD image in the monitor.
7. If video playback is required, please convert video into H.265 format and select a display card embedded with H.264 & H.265 hardware decoding function for smooth video playback. Nvidia GTX 1080 / 1080Ti will be a good fit for 8k/1k application.
8. In non-PC system is used, please select video player & photo player that can support 8k/1k high resolution output for GeoBox system.